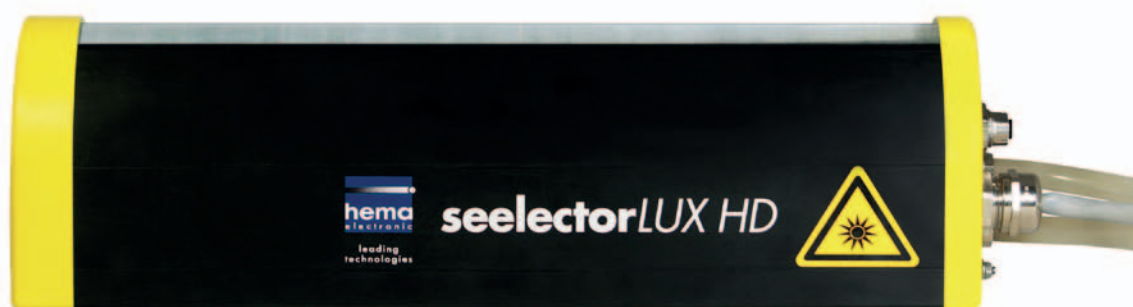




seelector*LUX HD*

see - capture - analyze - monitor



The extremely bright megalux
LED-linelight-system

Optimal homogeneous LED light
for surface inspection!



MEGALUX LED-linelight-system seelectorLUX HD

seelectorLUX HD

extremely bright and linear light

Integrated Design

seelectorLUX HD offers a completely new combination of light intensity, long-term stability and controller functionality. seelectorLUX HD integrates an intelligent controller, liquid cooling, power control and a communication interface in a very slim form.

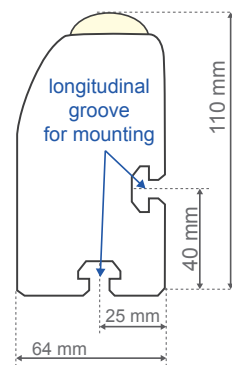
3 innovative technologies in seelectorLUX HD linear light:

- **ACT (Array Cooling Technology):**
liquid cooled LED arrays for stable long-term performance
- **HSE (Homogeneity Shaping Engine)**
low-loss, extremely homogenised, optical guidance of light
- **MIC 2.0 (Multiple Interface Controller)**
very simple integration

Intelligent Controller

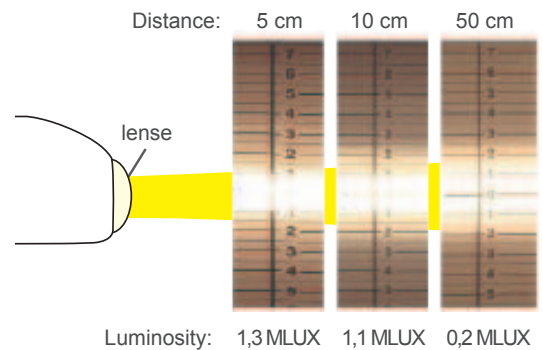
The powerful integrated controller offers self-diagnosis of the whole system including surveillance of the degradation of LEDs, extended flash functions, sequencer control and command line interpreter. The graphical user interface is based on an integrated webserver. It can be accessed by any browser-based system and supports remote access via the Internet.

Slim housing



Modelling of light

The newly developed Homogeneity Shaping Engine creates a band of light that is about 2 cm wide and unaffected by working distance.



Configuration surface

via web browser   

Configuring and monitoring of seelectorLUX HD linear lights can either be web-server-based or integrated into an existing machine controls system. Remote management is enabled through integration with an internet-connected network.



Technical data and operation

| specifications | seelectorLUX HD | seelectorLUX SD |
|--|--|---|
| light intensity dimming fix focus width of light line homogeneity | > 1.000.000 lux (in 50 mm working distance) 1 - 100 % 50 mm - 500 mm 20 mm > 98 % | > 150.000 lux (in 50 mm working distance) 1 - 100 % 50 mm - 500 mm 20 mm > 96 % |
| interfaces | Ethernet, Analog (0 -10 V) TTL trigger input TTL alarm output options: CAN, RS232 / RS485, USB, Profibus | |
| colours (wave lengths) white (temperature of colour) UV and IR mixed placement eye protection class | 470 nm (blue), 530 nm (green), 627 nm (red), more colours per request ANSI 4000K , more colours per request 365 nm - 405 nm, 760 nm - 1080 nm per request per request CE/IEC 62471:2006: without diffusor = moderate risk, with diffusor = low risk. | |
| mechanics | | |
| sizes cooling interface cooling housing weight | 250 mm up to 4000 mm in steps of 250 mm special lengths per request external, per request 3/8" aluminum, anodised, IP54 (IP67 and food save housing per request) approx. 5 kg (250mm) | housing design: <ul style="list-style-type: none"> simple and flexible mounting with double longitudinal slot system slim housing design for narrow installation conditions industrial cables and connectors self-sealing hose coupling (optional) |



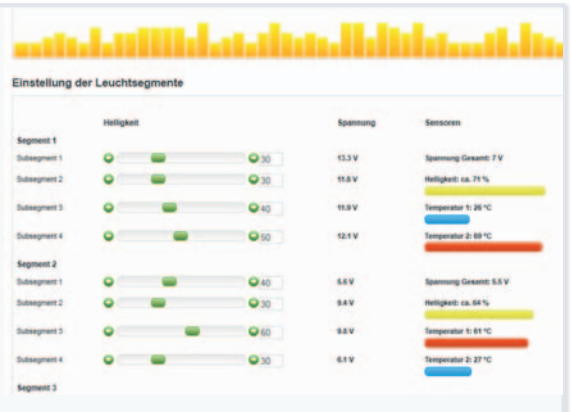
User interface



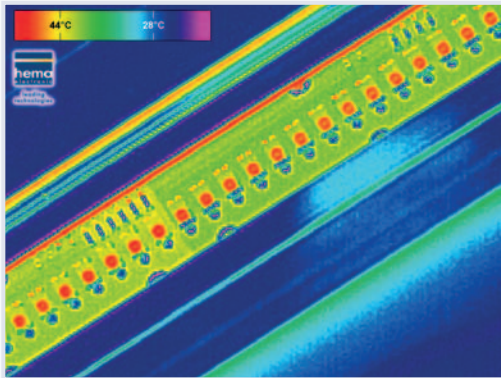
intensity control via web browser

controlled illumination profile
 (units of 6,25 cm are controlled to avoid inhomogenities created by camera or optics)

- saving / loading of longitudinal profiles
- network configuration
- status information includes alarm and temperature



seelectorLUX HD versions and controller



optimized heat management

versions:

seelectorLUX HD

- > 1 Megalux
- active liquid cooling

seelectorLUX SD

- > 150.000 lux
- passive cooling

MEGALUX

LED-linelight
seelectorLUX HD



With its liquid-cooled, extremely bright LED-array-line, the new intelligent seelectorLUX series offers essential advantages compared to existing systems and sets a new standard for LED-based line lights!

Optimal light for quality insurance and surface inspection of continuously produced goods, wafers, glas und metal. Inspection of documents, prints and printed circuit boards.

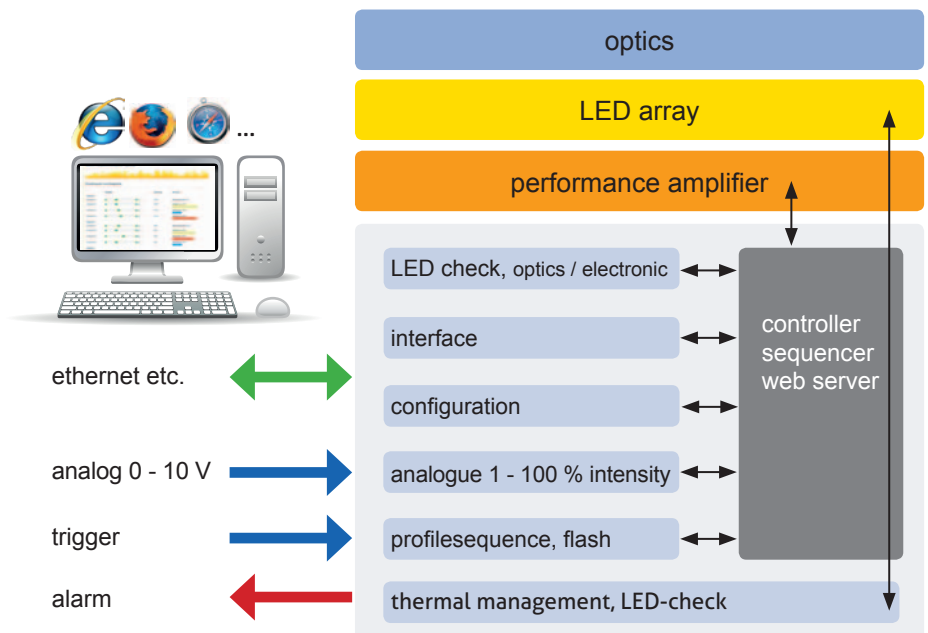
The adjustment of the light profile in combination with highest light intensity allows for much higher camera speed and better image quality.

The thermal management provides a life time of more than **50.000 hours**.

Controller

- control: DIG I/O or webservice
- 4 light profiles on board
- error memory
- thermal management
- emergency shutdown at extreme temperatures
- monitoring of degradation
- flash modus (optional)
- trigger up to 10 kHz
- profile sequencer (optional)
- log for service

Let us talk about
your application!
sales@hema.de



hema electronic GmbH
Röntgenstraße 31
73431 Aalen, Germany

Tel. +49 (0) 73 61 / 94 95 - 0
Fax: +49 (0) 73 61 / 94 95 - 45
E-mail: info@hema.de
Web: www.hema.de

seelectorLUX HD 05/11 en
Subject to technical alterations!